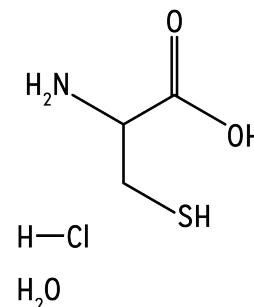


Product Specification

Product Name	L-Cysteine Hydrochloride Monohydrate
Compendia	USP/EP
CAS #	7048-04-6
Formula	$C_3H_7NO_2S \cdot HCl \cdot H_2O$
Molecular Weight	175.63
Description	White crystals or crystalline powder; characteristic odor and a strong acid taste
Solubility	Very soluble in water, and soluble in ethanol (99.5). It dissolves in 6 mol/L hydrochloric acid TS.
Identification	Compare the infrared absorption spectrum of the sample with that of the standard by potassium bromide disc method.



Test	Specification
Specific Rotation @20°C	+6.1 to +7.8° [Sample calculated on the dried basis, C=8, 1 mol/L HCl]
Specific Rotation @20°C	+6.0 to +7.1° [Sample calculated on the dried basis, C=8, 6 mol/L HCl]
State of Solution	Clear and colorless; Not less than 98.0%
Chloride (Cl)	19.89 to 20.29%
Ammonium (NH₄)	Not more than 0.02%
Sulfate (SO₄)	Not more than 0.020%
Iron (Fe)	Not more than 10ppm
Heavy Metals (Pb)	Not more than 10ppm
Arsenic (As₂O₃)	Not more than 1ppm
Related Substances	1) Conforms 2) Not more than 0.5% of L-Cystine; Not more than 0.2% of each impurity; Not more than 1.0% of total impurities
Loss on drying	8.50 to 12.00%
Residue on ignition (Sulfated)	Not more than 0.10%
Assay	98.5 to 101.0%
pH	1.5 to 2.0
Endotoxin	Less than 24.0 EU/g