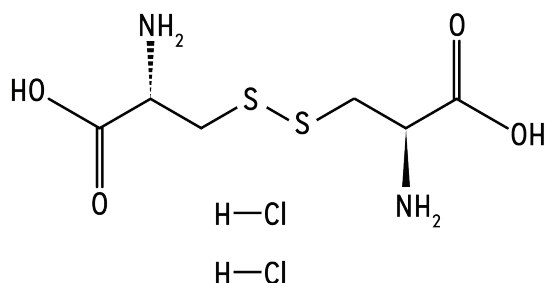


# Product Specification

Product Name	L-Cystine 2HCl
CAS #	30925-07-6
Formula	$C_6H_{12}N_2O_4S_2 \cdot 2HCl$
Molecular Weight	313.22
Description	White to pale yellow crystalline powder



Test	Specification
Specific Rotation @ 20°C	-174.0 to -164.0°
State of Solution	Clear and colorless
Chloride (Cl)	22.18 to 23.09%
Ammonium (NH <sub>4</sub> )	Not more than 0.030%
Sulfate (SO <sub>4</sub> )	Not more than 0.030%
Iron (Fe)	Not more than 30 ppm
Heavy Metals (Pb)	Not more than 10 ppm
Loss on Drying	Not more than 0.30%
Residue on Ignition (Sulfated)	Not more than 0.10%
Assay	98.0 to 102.0%

Other Tests	Specification
Appearance of Solution	Pass
Transmittance	Not less than 95%