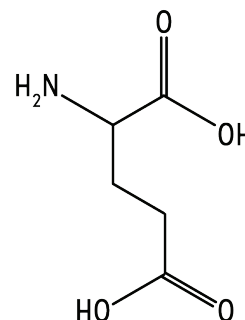


# Product Specification

<b>Product Name</b>	L-Glutamic Acid
<b>Compendia</b>	EP/IP
<b>CAS #</b>	56-86-0
<b>Formula</b>	C <sub>5</sub> H <sub>9</sub> NO <sub>4</sub>
<b>Molecular Weight</b>	147.13
<b>Description</b>	White crystals or crystalline powder; slightly characteristic taste and acid taste.
<b>Solubility</b>	Slightly soluble in water and practically insoluble in ethanol (99.5). Dissolves in 2 mol/L hydrochloric acid.
<b>Identification</b>	Compare the infrared absorption spectrum of the sample with that of the standard by potassium bromide disc method.



Test	Specification
<b>Specific Rotation @ 20°C</b>	+31.5 to 32.4°
<b>State of Solution</b>	Clear and Colorless; Not less than 98.0%
<b>Chloride (Cl)</b>	Not more than 0.020%
<b>Ammonium (NH<sub>4</sub>)</b>	Not more than 0.02%
<b>Sulfate (SO<sub>4</sub>)</b>	Not more than 0.020%
<b>Iron (Fe)</b>	Not more than 10ppm
<b>Heavy Metals (Pb)</b>	Not more than 10ppm
<b>Arsenic (As<sub>2</sub>O<sub>3</sub>)</b>	Not more than 1ppm
<b>Related Substances</b>	Conforms
<b>Loss on Drying</b>	Not more than 0.10%
<b>Residue on ignition (Sulfated)</b>	Not more than 0.10%
<b>Assay</b>	99.0 to 100.5%
<b>pH</b>	3.0 to 3.5
<b>Endotoxin</b>	Less than 6.0 EU/g