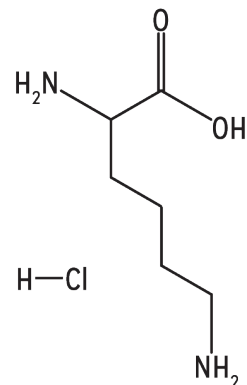


# Product Specification

<b>Product Name</b>	L-Lysine Monohydrochloride
<b>Compendia</b>	USP/EP/JP
<b>CAS #</b>	657-27-2
<b>Formula</b>	$C_6H_{14}N_2O_2 \cdot HCl$
<b>Molecular Weight</b>	182.65
<b>Description</b>	White powder; slightly characteristic taste.
<b>Solubility</b>	Freely soluble in water and in formic acid, practically insoluble in ethanol (95).
<b>Identification</b>	Compare the infrared absorption spectrum of the sample with that of the standard by potassium bromide disc method.



## Test

## Specification

<b>Specific Rotation @ 20°C</b>	+20.8 to +21.5°
<b>State of Solution</b>	Clear and Colorless; Not less than 98.0%
<b>Chloride (Cl)</b>	19.12 to 19.51%
<b>Ammonium (NH<sub>4</sub>)</b>	Not more than 0.02%
<b>Sulfate (SO<sub>4</sub>)</b>	Not more than 0.020%
<b>Iron (Fe)</b>	Not more than 10ppm
<b>Heavy Metals (Pb)</b>	Not more than 10ppm
<b>Arsenic (As<sub>2</sub>O<sub>3</sub>)</b>	Not more than 1ppm
<b>Related Substances</b>	1)Conforms 2)Any unspecified impurity: Not more than 0.20%; Total impurities: Not more than 1.00%
<b>Loss of Drying</b>	Not more than 0.40%
<b>Residue on ignition (Sulfated)</b>	Not more than 0.10%
<b>Assay</b>	98.5 to 101.0%
<b>pH</b>	5.0 to 6.0
<b>Endotoxin</b>	Less than 6.0EU/g